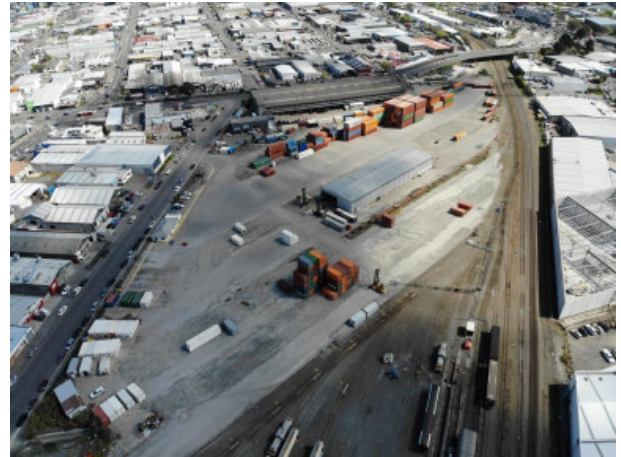


Industrial Warehouse for Lease Waltham Christchurch

Ad ID: 88342

Location: **67 Mowbray Street
Waltham
Christchurch**
Lease: **Price by Negotiation**
Type: **Industrial-Lease**
Area (m2): **31707.00**



Industrial/Warehouse - Whole Property for Lease

Commercial Property for Lease Description

Industrial Warehouse for Lease Waltham
Christchurch 67 Mowbray Street

Situated on the edge of the CBD in Waltham, this property is a short distance from Brougham Street and other main arterial roads of Christchurch.

Office = 122sqm
Workshop = 1,454sqm
Yard Area = 28,668sqm
Total Site = 30,244sqm

An opportunity to lease a large yard with canopy, office and container washdown area. This site can be serviced by rail, as it has a rail siding which enters the main trunk line into the yard. This provides easy access for heavy vehicles.

Contact Scott Bentley on 027 203 3310 for more information.

Contact:
Scott Bentley
027 203 3310 or 03 374 9889

CBRE - Christchurch
Licensed REAA 2008
Broker Ref: 15151515

