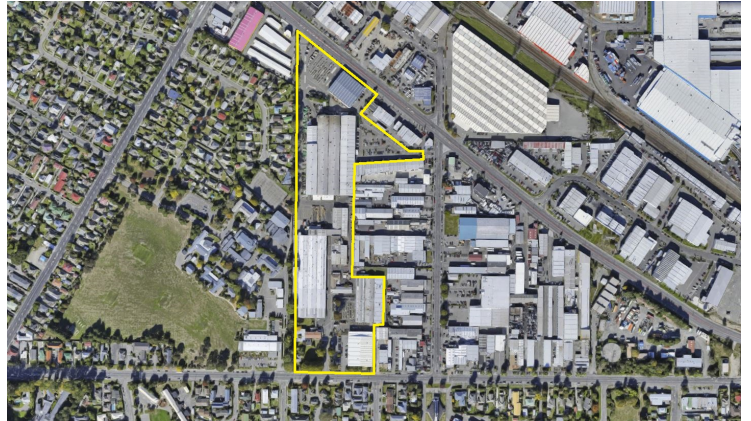


## Industrial Warehouse with Office for Lease Sockburn Christchurch

Ad ID: 79783

Location: **Sockburn  
Christchurch**  
Lease: **By Negotiation**  
Type: **Industrial-Lease**  
Area (m<sup>2</sup>): **11608.00**



### Industrial/Warehouse - Largest Building for lease in the Area

#### Commercial Property for Lease Description

Industrial Warehouse with Office for Lease Sockburn Christchurch

High Stud Warehouse / Factory. Multiple gantry cranes available. Large cafe and staff rooms.

Previously known as Cables & Comms building is ready for your business.

Well situated between Main South, Watts and Blenheim Road in Sockburn Christchurch.

Previously home to General Cable, this large manufacturing site has a variety of warehouses from 1,200 to 11,608 sqm. The site offers significant power feeds, a large water allocation and a variety of stud heights.

The Landlord is keen to develop any of the buildings to suit your specific needs.

Mezzanine Area 287 sqm  
Office Area 578 sqm  
Warehouse Area 10,743 sqm  
Yard Area 2,500 sqm

---

**Contact:**  
**Nathan O'Neill**  
0212882707 or 03 374 9889

CBRE - Christchurch  
Licensed REAA 2008  
Broker Ref: 14523691

